

Ambossplatte HP2/K 160 x 160 mm für Werkstückträger - Bosch Rexroth 3842242375

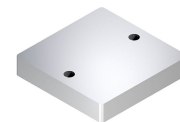
Item no. BRR-3842242375 **Manufacturer** Bosch Rexroth

Manufacturer no. 3842242375

The HP2/K anvil plate forms the defined contact surface on the underside of the workpiece pallet in the PE 2/XP positioning unit of the TS 2plus transfer system. Format 160 x 160 mm, designed for workpiece pallets with a total weight up to 20 kg.

TECHNICAL DATA

| | |
|------------------------|-------------------------|
| Article authenticity | Original product |
| Condition of article | New |
| Country of Manufacture | Germany |
| ESD-Ausführung | TEC |
| Weight | 0.1 kg |
| Zolltarifnummer | 84879059 |



STANDARDS & COMPLIANCE

ESD safe

DESCRIPTION

The HP2/K anvil plate is a component of the PE 2/XP positioning unit in the Bosch Rexroth TS 2plus transfer system. It is mounted on the underside of the workpiece pallet and forms the defined contact surface for the positioning operation.

- defined contact surface for precise positioning
- 160 x 160 mm format matching the workpiece pallet track width
- designed for workpiece pallets up to 20 kg total weight

Technical data

Workpiece pallet total weight (mG) 20 kg
Track width in direction of transport (b) 160 mm

| | |
|---------------------------------------|----------|
| Length in direction of transport (IT) | 160 mm |
| Weight | 1.446 kg |