

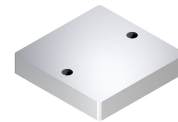
# Ambossplatte HP2/K, 160x240 mm, Positioniereinheit PE 2/XP - Bosch Rexroth 3842242376

**Item no.** BRR-3842242376 **Manufacturer** Bosch Rexroth**Manufacturer no.** 3842242376

The HP2/K anvil plate is the counterpart of the PE 2/XP positioning unit in the Bosch Rexroth TS 2plus transfer system. It is mounted on the underside of the workpiece pallet and absorbs the forces that occur during positioning. The 160 x 240 mm format suits workpiece pallets up to 30 kg total weight.

## TECHNICAL DATA

Article authenticity	<b>Original product</b>
Condition of article	<b>New</b>
Country of Manufacture	<b>Germany</b>
ESD-Ausführung	<b>TEC</b>
Weight	<b>2.98 kg</b>
Zolltarifnummer	<b>84879059</b>



## STANDARDS & COMPLIANCE

**ESD safe**

## DESCRIPTION

The HP2/K anvil plate is a component of the PE 2/XP positioning unit in the Bosch Rexroth TS 2plus transfer system. It is mounted on the underside of the workpiece pallet and serves as the counter surface for precise positioning and to absorb the positioning forces.

- Counterpart of the PE 2/XP positioning unit
- 160 x 240 mm format for workpiece pallets up to 30 kg total weight
- For use in the TS 2plus transfer system

## Technical data

**Workpiece pallet total weight (mG)** 30 kg  
**Track width in direction of transport (b)** 240 mm

**Length in direction of transport (IT)** 160 mm  
**Weight** 2.98 kg