

# Positioniereinheit PE 2, 320 x 320 mm, ESD - Bosch Rexroth 3842504716

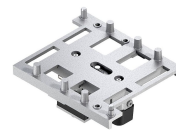
**Item no.** BRR-3842504716 **Manufacturer** Bosch Rexroth

**Manufacturer no.** 3842504716

The PE 2 positioning unit lifts the WT 2 workpiece pallet off the conveyor medium and fixes it in a precise position for processing. ESD-capable with a repetition accuracy of  $\pm 0,1$  mm, it combines with WT 2/LS without a special LS version. For use in the TS 2plus transfer system.

## TECHNICAL DATA

Article authenticity	<b>Original product</b>
Condition of article	<b>New</b>
Country of Manufacture	<b>Germany</b>
ESD-Ausführung	<b>TEC</b>
Weight	<b>0.1 kg</b>
Zolltarifnummer	<b>84313900</b>



## STANDARDS & COMPLIANCE

**ESD safe**

## DESCRIPTION

The PE 2 positioning unit lifts the WT 2 workpiece pallet off the conveyor medium in the TS 2plus transfer system and holds it in a precise position for assembly and processing operations. It is intended for designers and operators of automated assembly lines that require reproducible positioning.

- Repetition accuracy of  $\pm 0,1$  mm for reliable processing
- ESD-capable for use in electrostatically protected areas
- Can be combined with WT 2/LS, no special LS version required
- Delivered fully assembled, including fastening material

## Technical data

ESD	yes
Track width in direction of transport [b]	320 mm

Length in direction of transport [IT]	320 mm
Repetition accuracy	±0,1 mm
Permissible vertical process force	300 N
Lift of WT over conveyor medium [h0]	2,5 mm
Workpiece pallet total weight [mG]	30 kg
Thread size	G1/8"
Required compressed air connection [pmin]	4 bar
Required compressed air connection [pmax]	6 bar
Required accessories	Stop gate VE 2/...
Recommended accessories	Position sensing kit for PE 2
Scope of delivery	Incl. fastening material
Delivery information	Fully assembled
Weight	4,314 kg