

Endverbinder 45x45 designLINE, Zinkdruckguss, Nut 10, ESD - Bosch Rexroth 3842538658

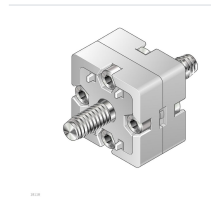
Item no. BRR-3842538658 **Manufacturer** Bosch Rexroth

Manufacturer no. 3842538658

The 45x45 designLINE end connector joins two slot 10 aluminum profiles end to end and transfers a bending moment of 200 Nm. The special white aluminum paint (RAL 9006) gives a high-quality appearance. The ESD-capable set includes the matching fastening material.

TECHNICAL DATA

Article authenticity	Original product
Condition of article	New
Country of Manufacture	Germany
ESD-Ausführung	ESD (antistatic)
Weight	0.335 kg
Zolltarifnummer	79070000



STANDARDS & COMPLIANCE

ESD safe ISO 4762 ISO 4032

DESCRIPTION

The 45x45 end connector in the designLINE version joins two aluminum profiles end to end and provides a stable, ESD-capable connection. It is suited to visible structures in machine and equipment construction where a high-quality appearance matters.

- End-to-end connection of 45x45 profiles with slot 10
- High bending moment of 200 Nm
- designLINE special paint in white aluminum (RAL 9006) for a high-quality design
- ESD-capable
- Set including fastening material

Technical data

Type	45x45
Profile slot	10
Dimensions	45x45
Bending moment 1	200 Nm
ESD	yes
Color	White aluminum (RAL 9006)
Material	Diecast zinc, painted
Material information	End connector designLINE: Diecast zinc, painted; Fastening material: Steel, galvanized
Fastening material	2x screw S12x30, 4x cylinder head screw ISO 4762 M6x20, 4x hexagon nut ISO 4032 M6
Scope of delivery	Set incl. fastening material (FS)
Weight	0.335 kg