

# Werkzeug Sicherheitskupplung VarioFlow plus - Bosch Rexroth 3842549388

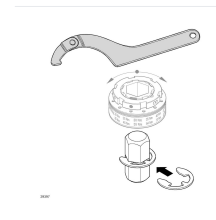
**Item no.** BRR-3842549388 **Manufacturer** Bosch Rexroth

**Manufacturer no.** 3842549388

Dedicated assembly tool for installing and removing the safety clutch in the VarioFlow plus chain conveyor system. Ensures correct fitting without damage to clutch components. Weight: 0.31 kg, packaging unit: 1.

## TECHNICAL DATA

Article authenticity	<b>Original product</b>
Condition of article	<b>New</b>
Country of Manufacture	<b>Germany</b>
ESD-Ausführung	<b>TEC</b>
Weight	<b>0.31 kg</b>
Zolltarifnummer	<b>82055980</b>



## STANDARDS & COMPLIANCE

**ESD safe**

## DESCRIPTION

The VarioFlow plus safety clutch tool is the purpose-made installation aid for safety clutches in the Bosch Rexroth VarioFlow plus chain conveyor system. It allows technicians to fit and remove the clutch correctly, protecting sensitive components from damage during maintenance and assembly operations.

- Designed specifically for the VarioFlow plus safety clutch - no improvised tooling needed
- Enables process-reliable assembly without marks or damage to clutch parts
- Lightweight and compact - 0.31 kg for easy handling at the line
- Packaging unit: 1 piece

## Technical data

Attribute	Value
Article number	3842549388

<b>Attribute</b>	<b>Value</b>
Product family	VarioFlow plus
Application	Safety clutch - assembly / disassembly
Weight	0.31 kg
Packaging unit	1 piece