

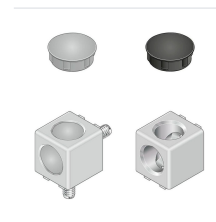
# Würfelverbinder 20/2 Set, Profilnut 6, ESD-leitfähig - Bosch Rexroth 3842549858

**Item no.** BRR-3842549858 **Manufacturer** Bosch Rexroth**Manufacturer no.** 3842549858

Two-outlet cubic connector for 20x20 mm aluminum profiles with slot 6, made from diecast aluminum. Creates an electrically conductive connection for ESD-compliant workstation and equipment structures. Supplied as a ready-to-install set including 2 countersunk screws S6x16 and a signal-gray cover cap D12.

## TECHNICAL DATA

Article authenticity	<b>Original product</b>
Condition of article	<b>New</b>
Country of Manufacture	<b>Germany</b>
ESD-Ausführung	<b>ESD (antistatic)</b>
Weight	<b>0.02 kg</b>
Zolltarifnummer	<b>83024900</b>



## STANDARDS & COMPLIANCE

**ESD safe** IEC 61340

## DESCRIPTION

The Cubic Joint 20/2 connects two 20x20 mm aluminum profiles (slot 6) at right angles while establishing an electrically conductive connection - a key requirement for ESD-safe workstation and machine frame assemblies per IEC 61340. The diecast aluminum body in signal gray withstands a bending moment of 18 Nm. The set includes all fasteners and a cover cap, so no additional hardware is needed for installation.

- ESD-conductive connection for profile structures per IEC 61340
- Bending moment 1: 18 Nm - sufficient for rigid frame and fixture assemblies
- Complete set: cubic connector + 2x countersunk screw S6x16 + cover cap D12 signal gray (PP) - ready to install
- Diecast aluminum body, galvanized steel fasteners - corrosion-resistant and lightweight
- Recommended accessory: cover cap D12, black (PP) for alternative color scheme

## Technical data

Property	Value
Profile dimensions	20x20 mm
Profile slot	6
Number of outlets	2
Bending moment 1	18 Nm
Connector material	Diecast aluminum
Fastening material	Steel, galvanized
Color	Signal gray
ESD	Yes (connector is conductive; cover caps in set are not ESD-compatible)
Scope of delivery	Cubic connector (standard), 2x countersunk screw S6x16, cover cap D12 signal gray (PP)
Recommended accessory	Cover cap D12, black (PP)
Weight	0.02 kg