

# Montagesockel symmetrisch für Kabelkanal, PA signalgrau RAL 7004, VE 10 - Bosch Rexroth 3842552247

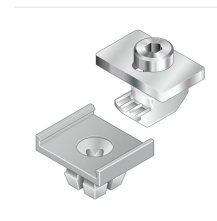
**Item no.** BRR-3842552247 **Manufacturer** Bosch Rexroth

**Manufacturer no.** 3842552247

This symmetrical mounting base in PA (signal gray RAL 7004) fixes cable ducts centrally on profiles with a single slot or on multi-slot profiles with a 40 mm modular dimension. It electrically insulates the cable duct from the support profile and requires no machining of the profile itself. Recommended spacing: every 500 mm. Packaging unit: 10 pieces.

## TECHNICAL DATA

Article authenticity	<b>Original product</b>
Condition of article	<b>New</b>
Country of Manufacture	<b>Germany</b>
Weight	<b>0.0021 kg</b>
Zolltarifnummer	<b>84313900</b>



## DESCRIPTION

The symmetrical mounting base 3842552247 secures cable ducts centrally on aluminum profiles with one slot or on multi-slot profiles at a 40 mm modular pitch - with no milling or drilling required on the support profile. Made from PA in signal gray RAL 7004, it electrically insulates the cable duct from the carrier profile and transfers clamping force reliably without deforming the mounting surface.

- Central mounting on single-slot and multi-slot profiles with 40 mm modular dimension
- Electrical insulation between cable duct and support profile
- No machining of the profile required - only the cable duct needs a 6.4 mm diameter hole
- Recommended mounting interval: every 500 mm
- Material PA signal gray RAL 7004; packaging unit 10 pieces

## Technical data

Attribute	Value
Article number	3842552247

<b>Attribute</b>	<b>Value</b>
Design	Symmetrical
Material	PA, signal gray RAL 7004
Weight	0.0021 kg (per piece)
Packaging unit	10 pieces
Cable duct hole diameter	6.4 mm
Modular dimension (symmetrical)	40 mm
Recommended mounting interval	500 mm