

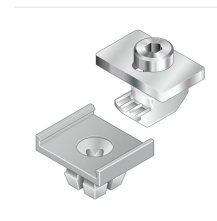
Montagesockel asymmetrisch für Kabelkanal, PA signalgrau RAL 7004, 10 Stück - Bosch Rexroth 3842552248

Item no. BRR-3842552248 **Manufacturer** Bosch Rexroth**Manufacturer no.** 3842552248

Asymmetric mounting base in PA (signal gray RAL 7004) for central, machining-free installation of cable ducts on Bosch Rexroth support profiles with a 45 mm modular dimension. Insulates the cable duct from the profile and ensures reliable force transfer without deformation. Supplied in packs of 10.

TECHNICAL DATA

Article authenticity	Original product
Condition of article	New
Country of Manufacture	Germany
Weight	0.0021 kg
Zolltarifnummer	84313900



DESCRIPTION

The asymmetric mounting base 3842552248 secures cable ducts centrally on multi-slot Bosch Rexroth support profiles with a 45 mm modular dimension - without any machining of the profile. It electrically insulates the cable duct from the support profile and provides reliable force transfer without deforming the mounting surface. Recommended spacing: one mounting base every 500 mm. Note: the cable duct must be drilled to 6.4 mm diameter.

- Central mounting of cable ducts on multi-slot profiles with 45 mm modular dimension
- Electrical insulation between cable duct and support profile
- Reliable force transfer without surface deformation
- No profile machining required
- Recommended mounting interval: every 500 mm

Technical data

Property	Value
Article number	3842552248

Property	Value
Design	Asymmetric
Material	PA
Color	Signal gray RAL 7004
Modular dimension	45 mm
Cable duct bore	dia. 6.4 mm
Recommended mounting interval	500 mm
Packaging unit	10 pieces
Weight	0.0021 kg