

Abweiser-Set links, Edelstahl, für SH 2/S, SH 2/ST, WI 2/M - Bosch Rexroth 3842558833

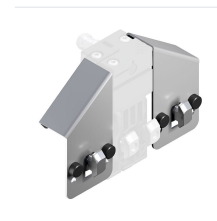
Item no. BRR-3842558833 **Manufacturer** Bosch Rexroth

Manufacturer no. 3842558833

Protective device for workpiece pallet guides: restricts unintentional access between the workpiece pallet and the switch bracket during operation. The left-hand set includes one deflector (left) in stainless steel and galvanized steel fastening material. Compatible with switch brackets SH 2/S and SH 2/ST and rocker WI 2/M; centering bolts allow fast pre-positioning in the profile slot.

TECHNICAL DATA

Article authenticity	Original product
Condition of article	New
Country of Manufacture	Germany
ESD-Ausführung	TEC
Weight	0.0099 kg
Zolltarifnummer	84313900



STANDARDS & COMPLIANCE

ESD safe

DESCRIPTION

The Deflector Set Left (3842558833) protects workpiece pallet guides by reliably restricting unintentional access between the workpiece pallet and the switch bracket during operation. Designed for attachment to switch brackets SH 2/S and SH 2/ST and to rocker WI 2/M. Centering bolts provide pre-positioning and allow quick assembly in the profile slot without additional tooling.

- Prevents unintentional contact between workpiece pallet and switch bracket
- Compatible with switch brackets SH 2/S, SH 2/ST and rocker WI 2/M
- Centering bolts for fast pre-positioning and tool-friendly assembly in the profile slot
- Deflector in corrosion-resistant stainless steel; fastening material in galvanized steel
- Supplied not assembled; scope of delivery: 1x deflector left, fastening material

Technical data

Property	Value
Article number	3842558833
Description	Deflector set left
Deflector material	Stainless steel
Fastening material	Steel, galvanized
Delivery condition	Not assembled
Scope of delivery	1x deflector left, fastening material
Weight	0.1 kg