

# Nutverbinder 8/10 für Schnellmontage, Stahl verzinkt - Bosch Rexroth 3842558567

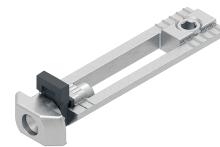
**Item no.** BRR-3842558567 **Manufacturer** Bosch Rexroth

**Manufacturer no.** 3842558567

Slot connector for Bosch Rexroth profiles with slot P1/P2 8/10. Slides freely within the slot for flexible positioning and locks in place without any profile machining. Pre-assembled headless setscrew, bending moment 35 Nm, torsional moment 15 Nm.

## TECHNICAL DATA

Article authenticity	<b>Original product</b>
Condition of article	<b>New</b>
Country of Manufacture	<b>China</b>
Weight	<b>0.034 kg</b>
Zolltarifnummer	<b>83024900</b>



## DESCRIPTION

The slot connector 3842558567 joins Bosch Rexroth aluminium profiles with slot P1/P2 8/10 without milling or drilling. The connector slides along the slot, is aligned to the required position, and is then secured with the pre-assembled headless setscrew (M4 / M8). The anti-torsion element in PA6 can be removed when a variable orientation in slot 10/10 is needed.

- No profile finishing required - ready to install as supplied
- Freely positionable within the slot for fast layout changes
- Easily accessible screws reduce assembly time on the line
- ESD-suitable for use in electrostatically protected areas
- Packaging unit: 10 pieces

## Technical data

Specification	Value
Profile slot P1/P2	8/10
Tightening torque	2.5 Nm (M4) / 10 Nm (M8)
Bending moment	35 Nm

<b>Specification</b>	<b>Value</b>
Torsional moment	15 Nm
Material - connector	Steel, galvanized
Material - anti-torsion element	PA6
ESD-suitable	Yes
Weight	0.034 kg
Packaging unit	10 pieces