

Nutverbinder 10/10 für Schnellmontage in Profil-Nut, Stahl verzinkt - Bosch Rexroth 3842558568

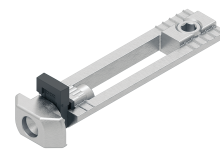
Item no. BRR-3842558568 **Manufacturer** Bosch Rexroth

Manufacturer no. 3842558568

Slot connector for Bosch Rexroth aluminum profiles with slot 10/10. Slide into the slot, position freely, and lock with the preassembled headless setscrew - no profile finishing required. Bending moment up to 110 Nm, ESD-suitable, sold in packs of 10.

TECHNICAL DATA

Article authenticity	Original product
Condition of article	New
Country of Manufacture	China
Weight	0.043 kg
Zolltarifnummer	83024900



STANDARDS & COMPLIANCE

ESD safe

DESCRIPTION

The slot connector 3842558568 joins aluminum profiles with a size-10 slot quickly and with minimal tooling. It slides freely along the slot until the preassembled headless setscrew is tightened. An anti-torsion element prevents rotation during tightening and can be removed when the installation situation requires it. Variable alignment covers both 10/10 and 8/10 slot configurations.

- No profile finishing required - insert and tighten directly
- Freely positionable along the slot before fixing
- Easily accessible screws, headless setscrew preassembled
- Removable anti-torsion element for special installation situations
- Variable alignment: slot 10/10 and 8/10
- ESD-suitable

Technical data

Specification	Value
Profile slot P1/P2	10/10
Tightening torque	7 Nm (M6), 12 Nm (M10)
Bending moment 1	110 Nm
Torsional moment	30 Nm
Material	Steel, galvanized
Material note - anti-torsion element	PA6
ESD	Yes
Weight	0.043 kg
Packaging unit	10 pieces