

Montagesockel für Kabelkanal D28L, signalgrau - Bosch Rexroth 3842559338

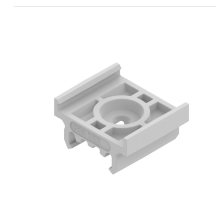
Item no. BRR-3842559338 **Manufacturer** Bosch Rexroth

Manufacturer no. 3842559338

Polyamide mounting base for tool-free attachment of the D28L cable duct to Bosch Rexroth support profiles. Electrically insulates the duct from the profile and centers it on single-slot (40 mm) or multi-slot (45 mm) profiles. Recommended spacing: every 500 mm; packaging unit: 10 pcs.

TECHNICAL DATA

Article authenticity	Original product
Condition of article	New
Country of Manufacture	Italy
Weight	0.002 kg
Zolltarifnummer	84313900



DESCRIPTION

The 3842559338 mounting base fixes the D28L cable duct to Bosch Rexroth support profiles without machining the profile itself, while providing electrical isolation between duct and profile. The symmetrical design centers the duct on profiles with a single slot (40 mm modular dimension) and on multi-slot profiles with a 45 mm modular dimension alike.

- Machining-free mounting - no milling or drilling of the support profile required
- Electrical insulation between cable duct and support profile
- Symmetrical form for central alignment on single- and multi-slot profiles
- Secure force transmission without deformation of the mounting surface once screwed
- Recommended mounting interval: every 500 mm

Technical data

Parameter	Value
Article number	3842559338
Compatible cable duct	D28L
Material	PA (polyamide)
Color	Signal gray

Parameter	Value
Drilling (cable duct)	required, diameter 6.4 mm
Recommended accessory	Self-tapping screw
Weight	0.002 kg
Packaging unit	10 pcs