

ESD-Fußplatte für EcoShape-Rundrohrsystem, Zinkdruckguss - Bosch Rexroth 3842559345

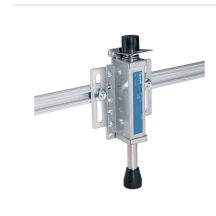
Item no. BRR-3842559345 **Manufacturer** Bosch Rexroth

Manufacturer no. 3842559345

Floor-mounting base plate for EcoShape profile structures in ESD-sensitive production environments. Made from diecast zinc and secured with two chipboard screws 5x30/24, supplied with all fastening material included.

TECHNICAL DATA

Article authenticity	Original product
Condition of article	New
ESD-Ausführung	ESD (antistatic)
Weight	1.14 kg
Zolltarifnummer	79070000



STANDARDS & COMPLIANCE

ESD safe **ISO 10642**

DESCRIPTION

The ESD base plate 3842559345 anchors EcoShape round tube assemblies securely to the floor and meets ESD requirements for use in electrostatic discharge-sensitive areas. The diecast zinc housing provides dimensional stability and lasting durability under the demands of manual assembly systems.

- ESD-compliant - suited for electrostatic-sensitive assembly and production lines
- Diecast zinc construction - precise, durable, and corrosion-resistant
- Supplied with fastening material: 2x chipboard screw 5x30/24
- Packaging unit of 10 - cost-efficient for larger installations
- Recommended accessories for profile mounting: countersunk screw ISO 10642 M5x16-8.8 and T-nut

Technical data

Attribute	Value
ESD	yes
Material	Diecast zinc
Fastening material	2x chipboard screw 5x30/24
Scope of delivery	Incl. fastening material (FS)
Recommended accessories	Countersunk screw ISO 10642 M5x16-8.8; T-nut
Weight	1.14 kg
Packaging unit	10 pcs