

# Hub-Quereinheit HQ 2/U2 LS, verstärkte Ausführung mit zwei Hubzylindern - Bosch Rexroth 3842999033

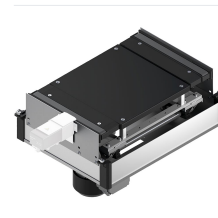
**Item no.** BRR-3842999033 **Manufacturer** Bosch Rexroth

**Manufacturer no.** 3842999033

The HQ 2/U2 LS lift transfer unit feeds workpiece pallets out of a longitudinal conveyor section into a transverse section and vice versa. Two lift cylinders handle large pallet dimensions at up to 50 kg total weight, while the suspended drive motor keeps the overall footprint within the profile width for tight-space installations. Compatible with ESD-compliant assembly lines on ST 2/... (45 mm) and ST 2/...-H (50 mm) sections.

## TECHNICAL DATA

Article authenticity	<b>Original product</b>
Condition of article	<b>New</b>
Country of Manufacture	<b>Germany</b>
Weight	<b>0.1 kg</b>
Zolltarifnummer	<b>84313900</b>



## STANDARDS & COMPLIANCE

**ESD safe**

## DESCRIPTION

The HQ 2/U2 LS is the reinforced variant of the HQ 2/U, designed to transfer workpiece pallets between longitudinal and transverse sections of a toothed-belt conveyor system. The suspended drive motor stays within the outer profile dimensions, allowing integration where space is limited.

- Two lift cylinders for reliable guidance with large or heavy workpiece pallets (max. total weight 50 kg)
- Pneumatic equipment for 2 (top, center) or 3 (top, center, bottom) lift positions
- Toothed-belt conveyor medium, ESD-safe
- Reversible operation supported
- Mounts on ST 2/... sections (45 mm profile width) or ST 2/...-H sections (50 mm profile width)
- Supplied fully assembled; includes pneumatic equipment, fastening material, kit for electrical

position inquiry, and protective housing

## Technical data

Parameter	Value
Version	Reinforced, 2 lift cylinders
Conveyor medium	Toothed belt (ESD-safe)
ESD-suitable	Yes
Preferred lengths [mm]	400, 480, 640, 800
Max. workpiece pallet total weight	50 kg
Pneumatic straight connection	6 mm
Required compressed air pmin / pmax	4 / 6 bar
Lift positions	PN 2: top and center   PN 3: top, center and bottom
Compatible profiles	ST 2/... (45 mm) or ST 2/...-H (50 mm)
Toothed-belt coupling	Not possible (compact design)
Scope of delivery	Fully assembled; pneumatic equipment, fastening material, electrical position inquiry kit, protective housing included
Recommended accessories	Damper DA 2/100-B (for vN > 12 m/min or pallet weight > 30 kg); rocker WI 2/ or WI/M with damper DA 2/100-C (for infeed)
Required accessories	1x M12x1 sensor per position, rated sensing range S = 4 mm
Weight	0.1 kg