

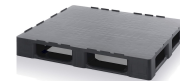
Reinraumpalette - Auer R 12105

Item no. R 12105 **Manufacturer** Auer**Manufacturer no.** R 12105

Cleanroom pallet with a fully closed, smooth deck in the format for hygienic storage and thorough cleaning. The closed, smooth deck wipes clean without residue.

TECHNICAL DATA

Article authenticity	Original product
Condition of article	New
Country of Manufacture	Germany
ESD-Ausführung	TEC
Hinweis	Stück auf Palette - 15
Weight	17.91 kg
Zolltarifnummer	39239000



STANDARDS & COMPLIANCE

ESD safe

DESCRIPTION

Cleanroom pallet with a fully closed, smooth deck in the format for hygienic storage and thorough cleaning.

- The closed, smooth deck wipes clean without residue.
- Heat- and cold-resistant and indifferent to moisture.
- Food-safe when made of new material, very economical in the reclaimed-material variant.
- Available with or without a retaining edge and as a heavy-duty version for high-bay racking.

Used in cleanroom, pharmaceutical, electronics and food environments with high hygiene demands.

The new-material version is food-safe, the reclaimed-material version is not food-safe. Manufactured in Germany.

Technical data

Dimensions L x W x H	120 x 100 x 16.3 cm
Upper surface	Closed
Design	with 2 transverse and 3 longitudinal skids
Non-continuous retaining edge	Outer retaining edge 7 mm
Production information	Production-related injection points unavoidable
Loading capacities	Dynamic: 1.500 kg / Static: 3.500 kg / High rack: 300 kg
Tolerance ±	10%
Weight	17.91 kg
Material	HD-PE-R
Colour	traffic black similar RAL 9017