

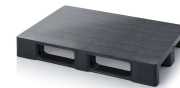
# Reinraumpalette - Auer RD 1208 OS

**Item no.** RD 1208 OS **Manufacturer** Auer**Manufacturer no.** RD 1208 OS

Cleanroom pallet with a fully closed, smooth deck in the format for hygienic storage and thorough cleaning. The closed, smooth deck wipes clean without residue.

## TECHNICAL DATA

Article authenticity	<b>Original product</b>
Condition of article	<b>New</b>
Country of Manufacture	<b>Germany</b>
ESD-Ausführung	<b>TEC</b>
Hinweis	<b>Stück auf Palette - 15</b>
Weight	<b>16 kg</b>
Zolltarifnummer	<b>39239000</b>



## STANDARDS & COMPLIANCE

**ESD safe**

## DESCRIPTION

Cleanroom pallet with a fully closed, smooth deck in the format for hygienic storage and thorough cleaning.

- The closed, smooth deck wipes clean without residue.
- Heat- and cold-resistant and indifferent to moisture.
- Food-safe when made of new material, very economical in the reclaimed-material variant.
- Available with or without a retaining edge and as a heavy-duty version for high-bay racking.

Used in cleanroom, pharmaceutical, electronics and food environments with high hygiene demands.

The new-material version is food-safe, the reclaimed-material version is not food-safe. Manufactured in Germany.

## Technical data

Dimensions L x W x H	120 x 80 x 15.5 cm
Upper surface	Closed
Design	with 3 skids and steel tube reinforcements
Non-continuous retaining edge	without retaining edge
Production information	Production-related injection points unavoidable
Loading capacities	Dynamic: 2,500 kg / Static: 4,500 kg / High rack: 1,500 kg
Tolerance ±	10%
Weight	16 kg
Material	HD-PE-R
Colour	traffic black similar RAL 9017